



# MODUBOOT™

LINEAR DIFFUSER

35BD

FALSE CEILING



GUARANTEED  
EFFICIENCY

# OBJECTIVE: OPTIMISED COMFORT

The Moduboot ceiling diffuser is the result of Carrier's unique experience and unrivalled expertise in gas flow technology. The exclusive Moduboot profile, using the Coanda effect, ensures exceptional comfort and excellent air distribution.

The air flow is directed along the ceiling encouraging rapid and uniform mixing of ambient and supply air.

This high-induction system prevents "cold shower" effects and guarantees quiet and complete comfort of the occupants.

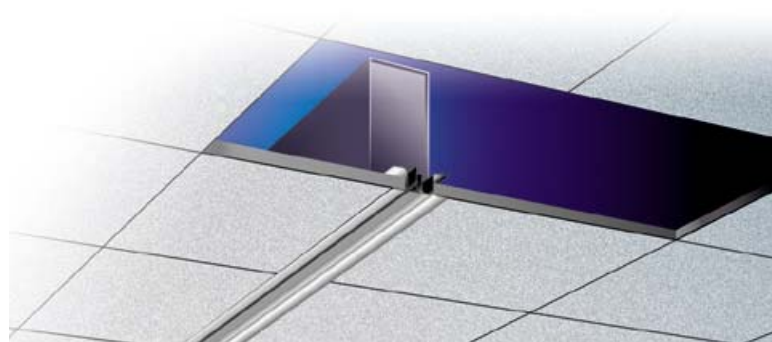
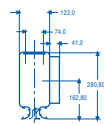
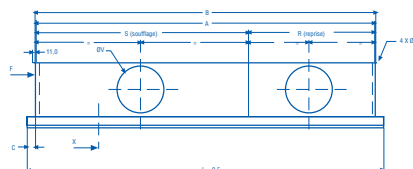
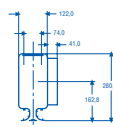
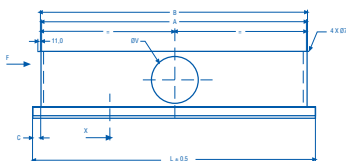
Conceived for variable air volume applications, Moduboot is the logical and natural system extension.



## OBJECTIVE: FULL INTEGRATION

The Moduboot is available in five standard lengths (600, 1200, 1350, 1500 and 1800 mm). It is perfectly integrated into any false ceiling where it becomes practically invisible – you only see the discreet white aluminium strip (RAL 9010)\*. The Moduboot outlet strip can also support the false ceiling with diffuser extensions, thus becoming an integral part of the décor.

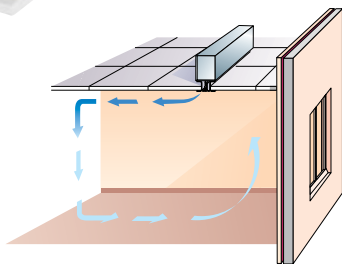
*\* Diffusers in other RAL colours available on request.*





# OBJECTIVE: AUTOMATIC SEASONAL CHANGEOVER

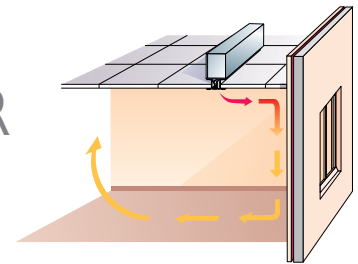
The Optimix thermostat version benefits from a simple, reliable design and does not require any maintenance. It precisely measures the air temperature in the plenum, allowing the thermostat to respond and automatically change the damper position from "cold" to "warm" by reversing the air flow direction.



SUMMER



WINTER



In summer the fresh air is directed towards the interior of the air conditioned space. The air is guided towards the warm air near the façade, rapidly mixing with the ambient air along the ceiling, and then gently descends into the space.

In winter the air distribution pattern is reversed. The warm air flow is directed towards the outside of the room and descends along the windows, eliminating "cold wall" effects.

## THE RIGHT SYSTEM FOR ANY APPLICATION

Both systems are unobtrusive and discreet and ensure acoustical comfort. The plenum is fully insulated with fibre wool for maximum sound level attenuation.

With the two Moduboot versions Carrier offers a complete range of solutions:  
**"supply or return air" or "supply/return air".**

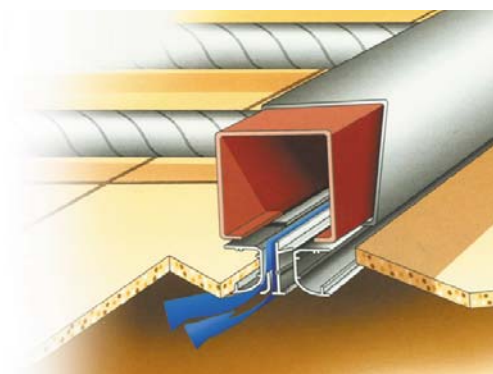
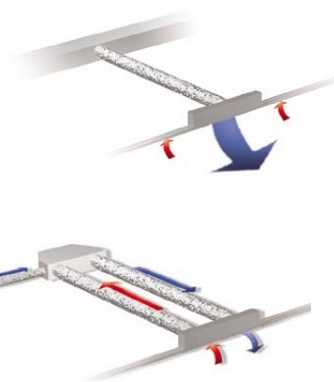
### Supply or return air.

This version allows supply air into the room or removes air from the room. It is ideal for any product type that requires variable volume air distribution such as 3V or Comfort Zone.

### Supply/return air.

This version introduces supply air into the room and removes air from the room via a plenum and a single diffuser. This solution is recommended for applications with ATM, ICM and ITM terminals.

The benefits are: obvious space saving - supply and return air via the same linear diffuser; enhanced aesthetics - the diffusers are integrated into the ceiling design; ultra-quiet operation - the noise level is simultaneously controlled in both functions; economic installation - only one operation is required. This system offers the dual advantages of optimised comfort and efficiency.



TYPE MODUBOOT DIFFUSER	DIMENSIONS (mm)				AIR FLOW		AIR THROW		PRESSURE LOSS (Pa)	REFERENCE	NR NOISE LEVEL			
	A	L	E	F	MAX. (l/s)	MIN. Wall (m)	MAX. (m)							
TYPE AH-TWB Two-way blow (2-way / 2 slots) 1+1														
	1130	1200	122	74	139	1,50	4,40	41	35BD1200AH03FB	34				
	1130	1350	122	74	139	1,50	4,40	41	35BD1350AH03FB	34				
1430	1500	122	74	167	1,45	4,20	49	35BD1500AH03FB	34					
TYPE AH-OWB One-way blow (1-way / 2 slots)														
	1130	1200	122	74	139	1,80	6,00	44	35BD1200AH13FB	35				
	1130	1350	122	74	139	1,80	6,00	44	35BD1350AH13FB	35				
1430	1500	122	74	167	1,75	5,70	49	35BD1500AH13FB	35					
TYPE VH-TWB Two-way blow (2 - way / 3 slots) 2+1														
	1130	1200	122	74	167	1,40	5,06	47	35BD1200VH13FB	36				
	1130	1350	122	74	167	1,40	5,06	47	35BD1350VH13FB	36				
1430	1500	122	74	189	1,24	4,00	38	35BD1500VH13FB	36					
TYPE MH-OWB One-way blow (1 - way / 3 slots)														
	1130	1200	122	74	167	1,38	5,06	45	35BD1200MH13FB	36				
	1130	1350	122	74	167	1,38	5,06	45	35BD1350MH13FB	36				
1430	1500	122	74	189	1,24	4,00	38	35BD1500MH13FB	34					
TYPE GH-TWB Two-way blow (2 - way / 4 slots)														
	1130	1200	140	92	189	1,00	3,90	35	35BD1200GH03FB	35				
	1130	1350	140	92	189	1,00	3,90	35	35BD1350GH03FB	35				
1430	1500	140	92	189	0,90	3,00	26	35BD1500GH03FB	30					
TYPE JH-TWB Two-way blow (2 - way / 4 slots) 3+1														
	1130	1200	140	92	189	1,00	3,90	35	35BD1200JH13FB	35				
	1130	1350	140	92	189	1,00	3,90	35	35BD1350JH13FB	35				
1430	1500	140	92	189	0,90	3,00	26	35BD1500JH13FB	30					
OPTIMIX TYPE EH-TWB (2 - way / 3 slots) 2C/2H														
	1130	1200	122	74	111	1,20	4,00	27	35BD1200EH13FB	35				
	1130	1350	122	74	111	1,20	4,00	41	35BD1350EH13FB	35				
1430	1500	122	74	139	1,31	4,20	32	35BD1500EH13FB	36					
OPTIMIX TYPE SH-TWB (2 - way / 3 slots) 2C/1H														
					C	H	C	H	C	H				
	1130	1200	122	74	64	111	0,50	1,20	1,70	4,00	16	27	35BD1200SH13FB	36
1130	1350	122	74	64	111	0,50	1,20	1,70	4,00	16	27	35BD1350SH13FB	36	
1430	1500	122	74	72	139	0,40	1,15	1,70	4,00	14	27	35BD1500SH13FB	36	
OPTIMIX TYPE XH-TWB (2 - way / 4 slots) 3C/2H														
					C	H	C	H	C	H	C	H		
	1130	1200	140	92	106	139	1,00	0,96	2,93	3,15	28	28	35BD1200XH13FB	32
1130	1350	140	92	106	139	1,00	0,96	2,93	3,15	28	28	35BD1350XH13FB	32	
1430	1500	140	92	125	181	0,80	1,00	3,11	3,20	22	35	35BD1500XH13FB	36	
OPTIMIX TYPE XH-TWB Supply / Return (2 - way / 4 slots) 3C/2H														
					C	H	C	H	C	H	C	H		
	1430	1500	140	92										
	R=538													
	S=892				83	111	1,00	1,30	2,90	3,50	42	80	35SR1500XH13FB	35
1730	1800	140	92											
R=663														
S=1067				111	139	1,00	0,80	3,40	2,50	32	88	35SR1800XH13FB	35	
OPTIMIX TYPE EH-TWB Supply / Return (2 - way / 3 slots) 2C/2H														
					C	H	C	H	C	H	C	H		
	1430	1500	140	92	69		1,10		3,00		5,3		35SR1500EH13FB	35
	R=538													
	S=892													
1730	1800	140	92	97		1,30		2,90		68		35SR1800EH13FB	35	
R=663														
S=1067														



Order No. 18096-20-06/2005  
 Supersedes order No. 28096-20-10/2001  
 Manufacturer reserves the right to change  
 any product specifications without notice.



A member of the United Technologies Corporation family